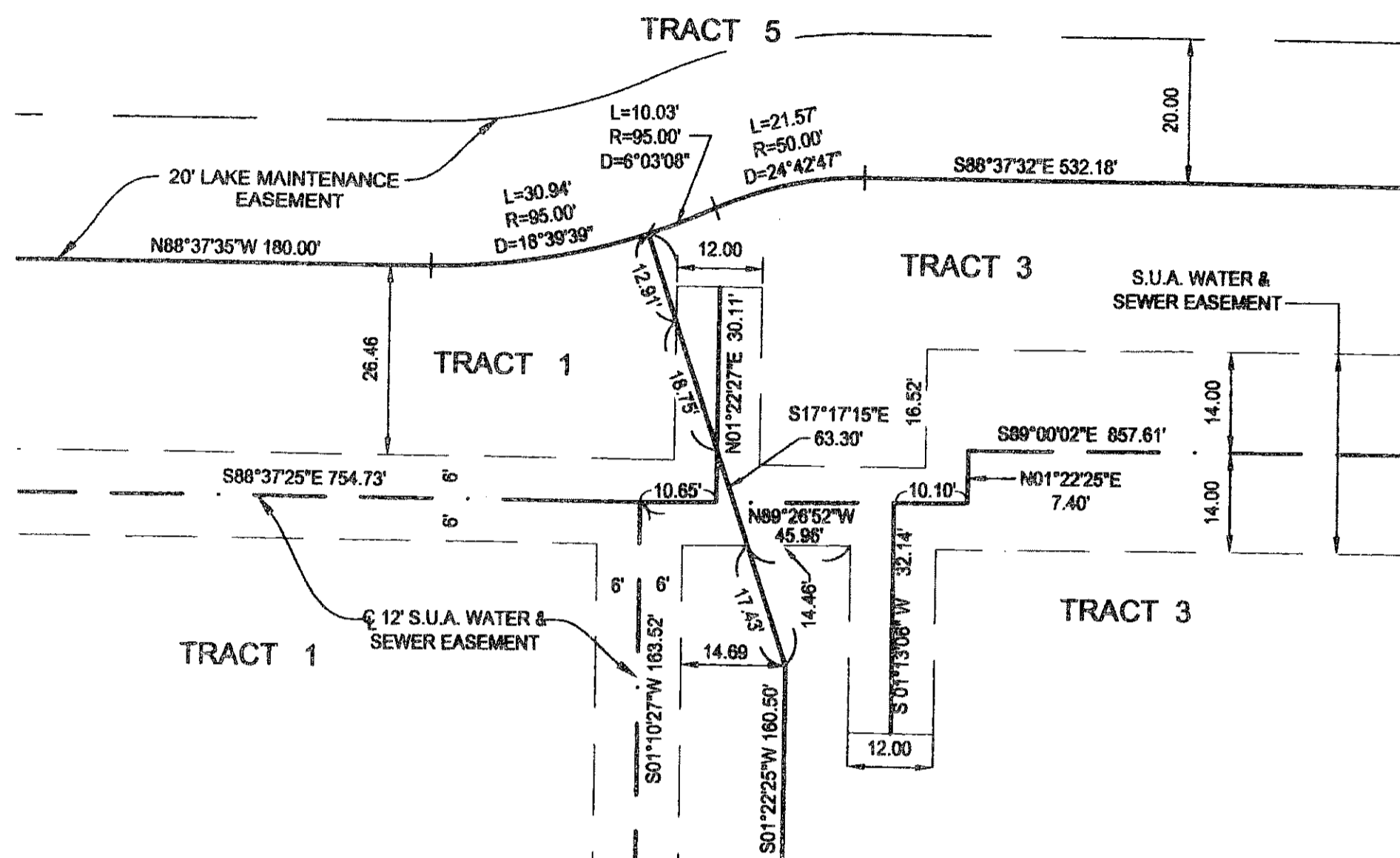


BORLAND CENTER REPLAT

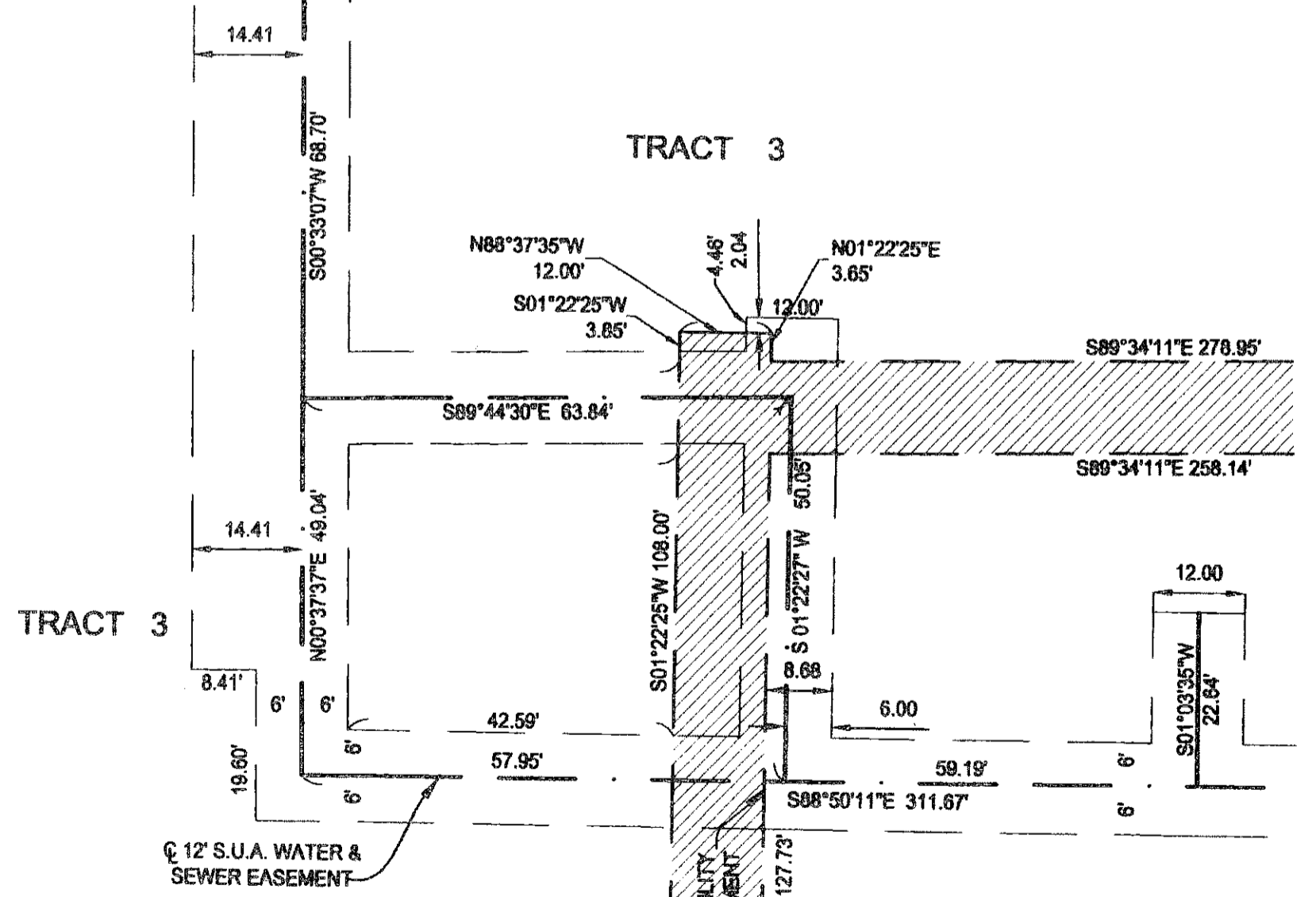
BEING A REPLAT OF TRACTS 1 THROUGH 8, INCLUSIVE, BORLAND CENTER, AS RECORDED IN PLAT BOOK 104, PAGES 110 THROUGH 117, PUBLIC RECORDS OF PALM BEACH COUNTY, FLORIDA, LYING IN SECTION 1, TOWNSHIP 42 SOUTH, RANGE 42 EAST, CITY OF PALM BEACH GARDENS, PALM BEACH COUNTY, FLORIDA
SHEET 8 OF 8 NOVEMBER 2006

42

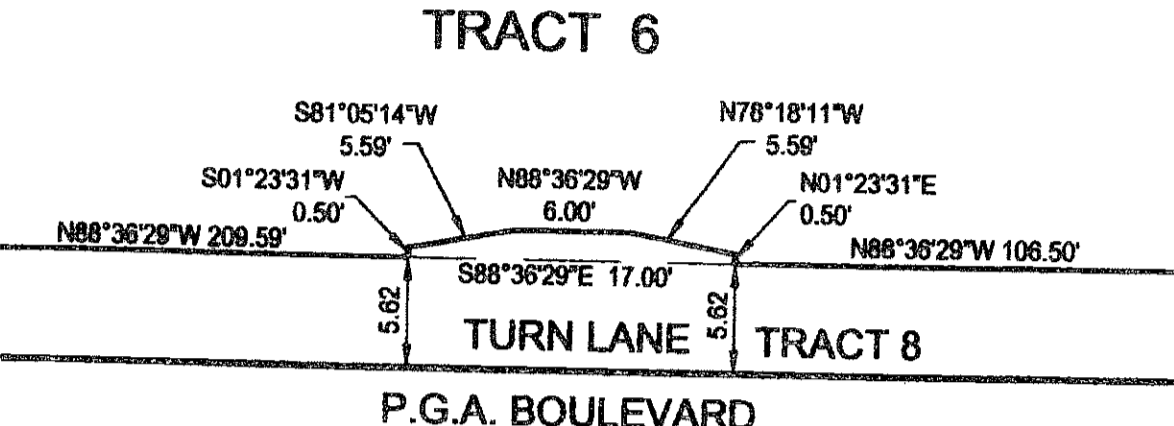
STATE OF FLORIDA
COUNTY OF PALM BEACH
This plat was filed for record at _____ M. this day of _____, 2006 and duly recorded in Plat Book No. _____ on Pages _____ thru _____.
Sharon R. Beck
Clerk and Comptroller
By _____ D.C.



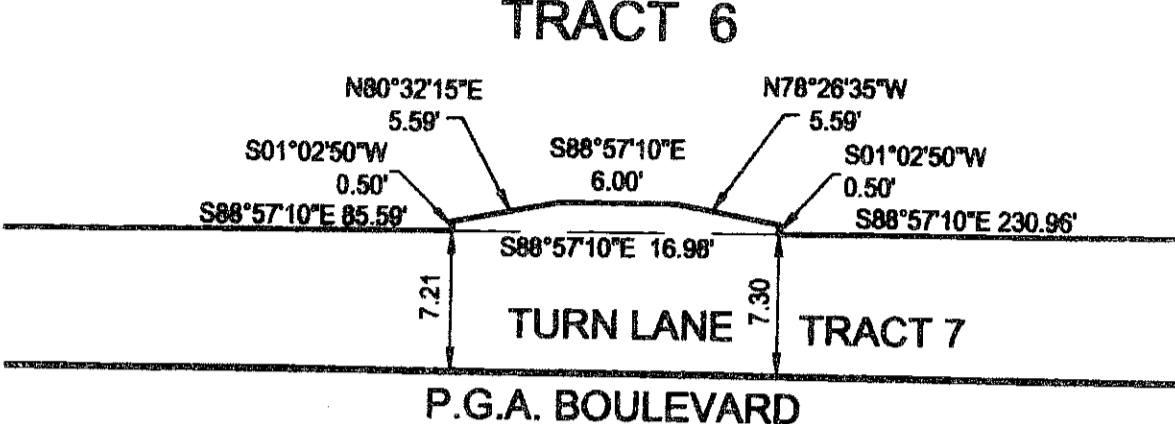
DETAIL 'C'
GRAPHIC SCALE IN FEET
SCALE: 1" = 20'



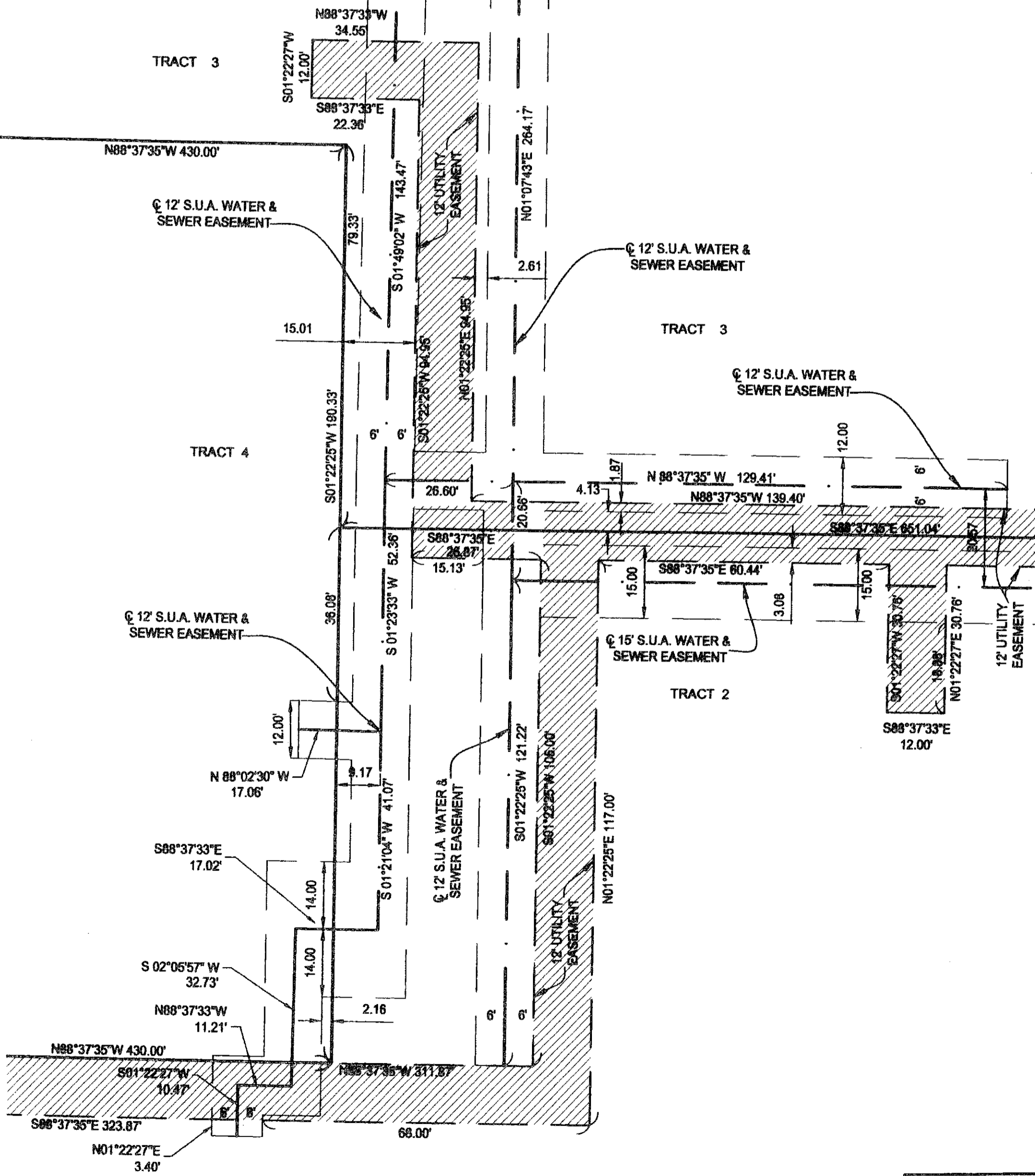
DETAIL 'E'
GRAPHIC SCALE IN FEET
SCALE: 1" = 20'



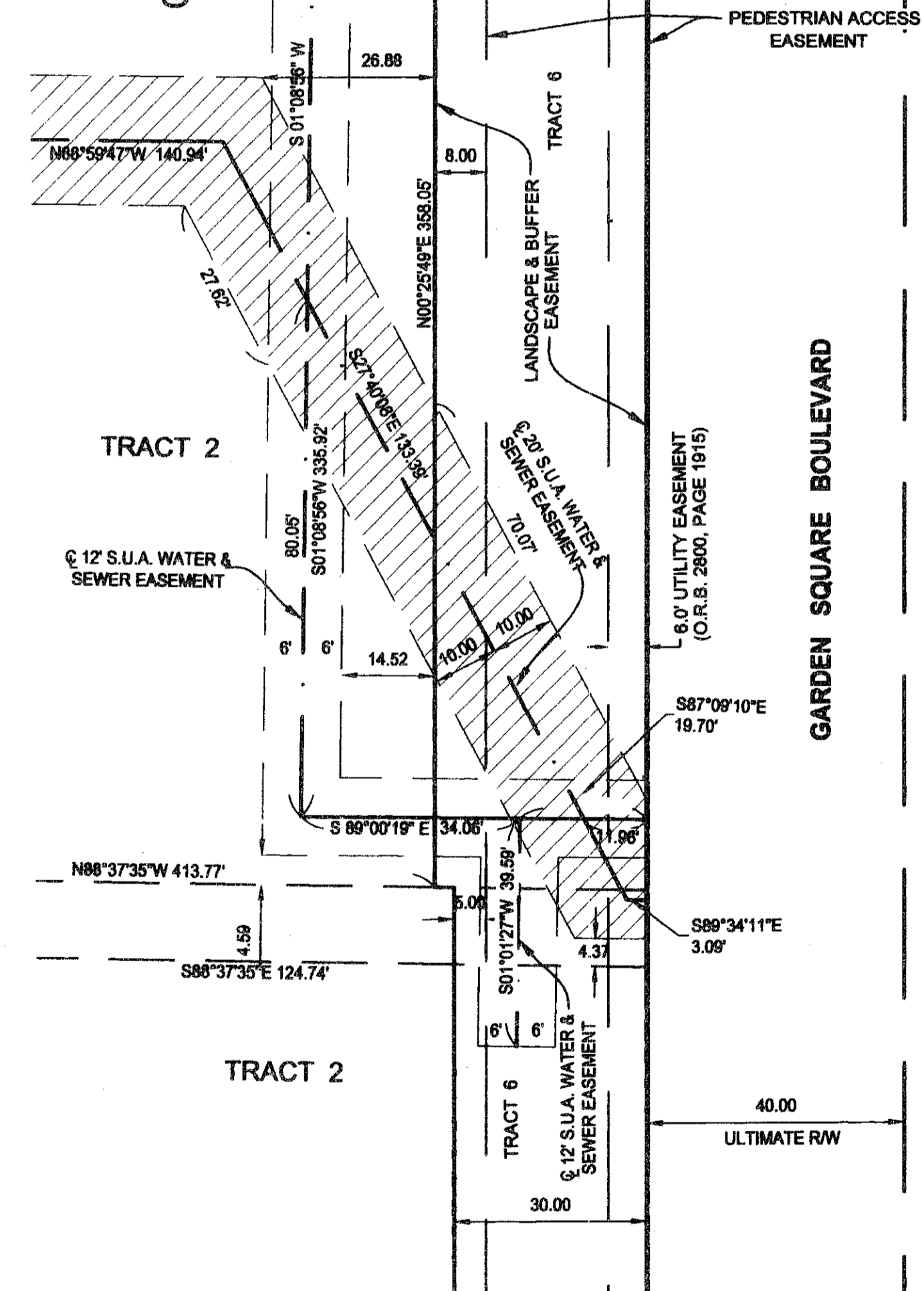
DETAIL 'A'
GRAPHIC SCALE IN FEET
SCALE: 1" = 20'



DETAIL 'B'
GRAPHIC SCALE IN FEET
SCALE: 1" = 20'



DETAIL 'D'
GRAPHIC SCALE IN FEET
SCALE: 1" = 20'



DETAIL 'F'
GRAPHIC SCALE IN FEET
SCALE: 1" = 20'

- ABBREVIATIONS:
- A/C = AIR CONDITIONER
 - CS = CONCRETE BLOCK STRUCTURE
 - CMH = COMMISSIONERS' MINUTES BOOK
 - CMH = CONFLICT MANHOLE
 - CONC = CONCRETE
 - COV = COVERED
 - CLF = CHAIN LINK FENCE
 - DE = DRAINAGE EASEMENT
 - DB = DEED BOOK
 - D.C.V. = DETECTOR CHECK VALVE
 - DIP = DUCTILE IRON PIPE
 - FH = FIRE HYDRANT
 - FND = FOUND
 - FPL = FLORIDA POWER & LIGHT
 - IP = IRON PIPE
 - INVT = INVERT
 - IRC = IRON ROD WITH PLASTIC CAP
 - LB = LICENSE BUSINESS
 - LS = LICENSE SURVEY
 - (M) = MEASURED
 - MHW = MEAN HIGH WATER
 - MON = MONUMENT
 - ORB = OFFICIAL RECORD BOOK
 - PLAT = PLAT
 - PB = PLAT BOOK
 - POB = POINT OF BEGINNING
 - POC = POINT OF COMMENCEMENT
 - PRM = PERMANENT REFERENCE MONUMENT
 - ROW = RIGHT-OF-WAY
 - RC = RAISED CURB
 - RCP = REINFORCED CONCRETE PIPE
 - RPB = ROAD PLAT BOOK
 - (S) = SURVEY
 - SLP = STOP LIGHT POLE
 - SMH = SANITARY MANHOLE
 - SBTMH = SOUTHERN BELL TELEPHONE MANHOLE
 - STMH = STORM MANHOLE
 - TB = TRAFFIC BOX
 - TLP = TRAFFIC LIGHT POLE
 - TV = TELEVISION
 - UE = UTILITY EASEMENT
 - WP = WOOD POLE

LIDBERG LAND SURVEYING, INC.
875 West Indian Town Road, Suite 200
Jupiter, Florida 33458 TEL 561-746-8454
LB 4431

| | | | |
|--|--------|---------|--------------|
| CAD K:\AUTOCAD\014242\05-046_04\DWG\05-046-306.DWG | | | |
| REF K:\AUTOCAD\ | | | |
| FLD | CREW | FB. 000 | FC. 000 |
| OFF | A.J.C. | 000 | 000 |
| CKD | D.C.L. | SHEET 8 | OP 8 |
| | | DATE | 11/02/06 |
| | | JOB | 05-046 (306) |
| | | DWG | 005-046P |